

River Ambassador's Report

SuAsCo Wild & Scenic

RSC Meeting

September 30, 2025

Beautiful new
drone shot by

Thomas Lashmit
Town Surveyor
Wayland DPW

Ellie put up on
our website as
new banner



Warners Pond Update

Concord's Natural Resources Commission

Will be issuing request for Letters of Interest in serving on subcommittee

Charge:

Develop a set of baseline conditions

Monitor future health of pond





Outreach

Tabling Events

- Maynard - August 16 9 - 1
- Framingham - August 28 3 - 7
- Bedford Day - September 20 10 - 2



Prepared package of materials for all 8 libraries

National Park Service

Dragonfly Mercury Project

Hudson, Framingham & Concord



Dragonfly Larva



MMNHP Staff
Identifying Larvae

Water Chestnut Removal

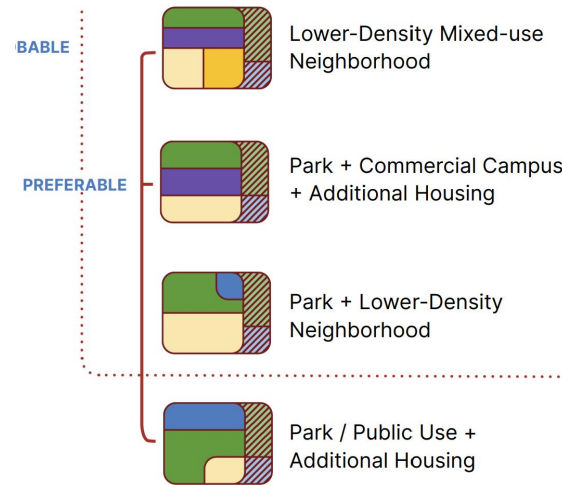
Concord River in Carlisle by Jonathan DeKock, July 19th

Sponsored by Carlisle Conservation Foundation and OARS



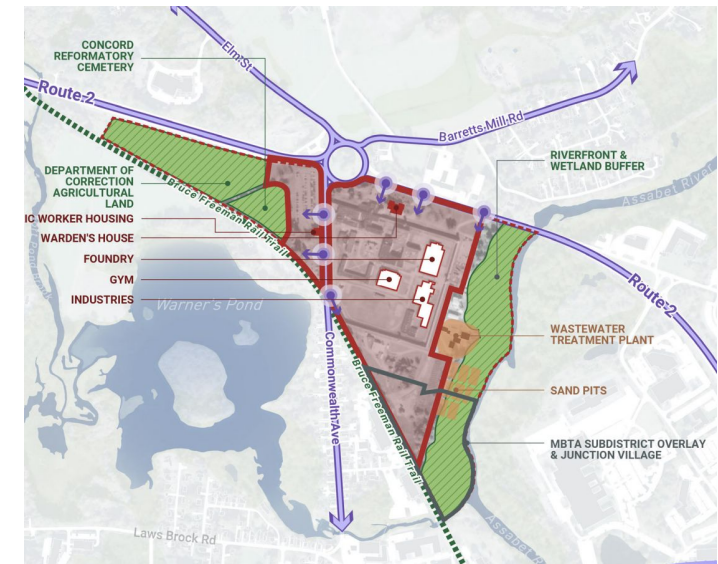
MCI Concord

Plan is finalized



Town of Concord Vision Plan

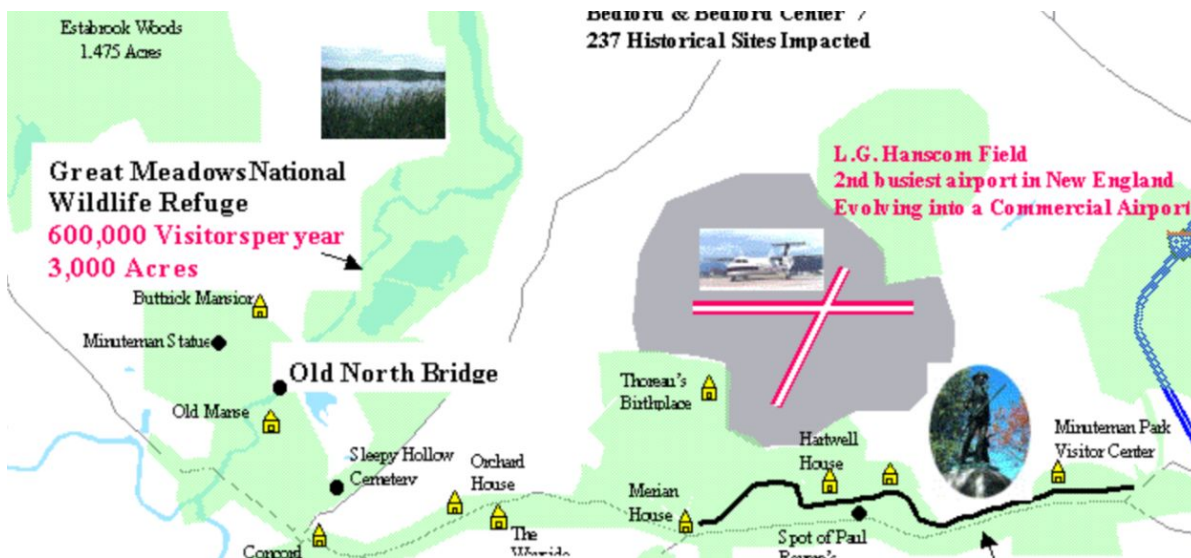
For the Site of the Closed
Massachusetts Correctional Institution
at Concord (MCI Concord)



Other Meetings

Attended

- Billerica ConCom
- Concord Conservation Coffee
- Concord MCI
- Concord NRC re Warners Pond
- Bedford SPJE - Status Update (flights over Concord River)



**SPJE STATE
HOUSE RALLY!
TUES, OCT 14th
10:30am**

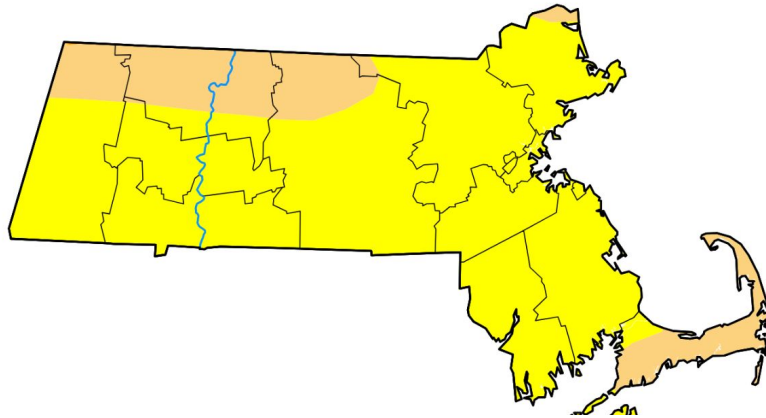
Administrative Work (Channeling Emma)

- Payroll
- Schedule
- MOUS/RFPs
- Reimbursements
- New member updates



Along the River

Drought Status



Map released: Thurs. September 25,

Data valid: September 23, 2025 at 8 a.m. ET

Intensity

- None
- D0 (Abnormally Dry)
- D1 (Moderate Drought)
- D2 (Severe Drought)
- D3 (Extreme Drought)
- D4 (Exceptional Drought)
- No Data

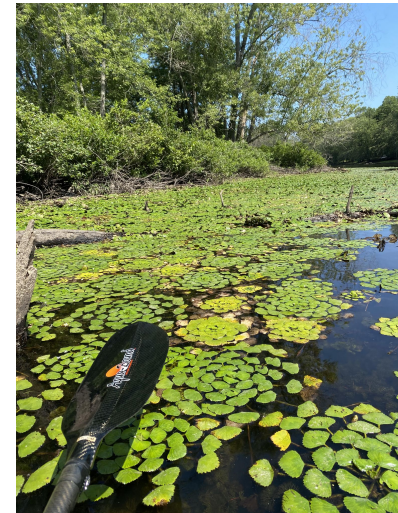
Authors

United States and Puerto Rico Author(s):

Violation - Elm St & Sudbury River, Concord



Lots of new water chestnut infestations



Future Events

Sherman's Bridge Renovation by Town of Sudbury

Full set of draft plans available on the Sudbury DPW website

<https://sudbury.ma.us/dpw/shermans-bridge/>

The Towns of Sudbury and Wayland are proposing a rehabilitation project to:

- *Replace the current wooden deck with a stronger glulam timber deck and asphalt overlay.*
- *Install crash-tested bridge railings and approach guardrails.*
- *Complete targeted substructure repairs to extend the bridge's life and improve safety.*
- *Reduce maintenance costs, improve travel safety, and protect the Sudbury River.*

MassDOT has also indicated that without these upgrades, the bridge may face closure.

Public Mtg CHANGED TO 10/9 6:30 pm at Fairbanks Community Ctr

Lincoln - Paddle to the new dock 11/2